

PAPER NAME

**cek turnitin.pdf**

WORD COUNT

**5713 Words**

CHARACTER COUNT

**29349 Characters**

PAGE COUNT

**16 Pages**

FILE SIZE

**812.8KB**

SUBMISSION DATE

**Aug 11, 2023 12:29 PM GMT+7**

REPORT DATE

**Aug 11, 2023 12:30 PM GMT+7**

### ● 8% Overall Similarity

The combined total of all matches, including overlapping sources, for each database.

- 6% Internet database
- 3% Publications database
- Crossref database
- Crossref Posted Content database
- 0% Submitted Works database

### ● Excluded from Similarity Report

- Bibliographic material
- Cited material

## Profession Recommendation Based On Multiple Intelligence For High School Students

One of the problems students often face is the lack of understanding of their interests and talents which will cause confusion in making future study choices and career plans. Career selection is an expression of personality into the world of work followed by identification of certain occupational stereotypes. Eight intelligences according to dr. Howard Gardner is linguistic, logic mathematic, visual spatial, musical, kinesthetic, interpersonal, intrapersonal, and naturalist. This research purpose is to develop a system that produces information and professional recommendations that are in accordance with multiple intelligences of prospective high school students using a combination of Bayes' theorem and weighted product (WP) method. User's preference value is calculated using the Bayes Theorem method to give each multiple intelligence value which is a criterion. WP method calculation to find professions that match user preferences. Weight of each criterion needed in WP method is calculated by Rank Order Centroid method. WP calculation will produce a ranking of 3 professions according to the input from user. From system testing results that compared to results from experts, an accuracy of 67.33% is obtained. Based on accuracy value, it can be said that accuracy level system is quite good.

Keywords: profession, multiple intelligences, Bayes' theorem, weighted product

### INTRDUCTION

In the 21st century education system, students are encouraged to have an ability to solve problems, are trained to think critically, evaluate information and be able to work in teams to collaborate productively with other students. Educators are required to play an active role in learning process to familiarize students with critical, innovative and even creative thinking in solving a problem (Nulhakim & Berlian, 2020). The goal of Indonesian education is to develop the potential of students to have faith and piety to the Almighty, have noble character, be healthy, knowledgeable, capable, creative, independent and become responsible citizens. To achieve this goal, the Indonesian government implements the 2013 Curriculum which is based on integrated knowledge, behavior and skills competencies to create productive, creative and innovative students who are able to compete in the globalization era (Ernawati et al., 2019). Various learning methods and strategies must be continuously improved to meet global demands. Indonesia must apply the concept of education that refers to various fields. The application of program variations can make student development better (Hilyana & Khotimah, 2021). Every student is required to develop by solving a variety of problems from various fields to fulfill continuous learning and participate effectively in society. Exploration of interesting issues and materials can provide opportunities for students to practice a lot of intelligence with activities that can influence learning and build knowledge (Fadloli et al., 2021).

One of the problems that is often faced by students is a lack of knowledge about the interests and talents possessed. This can lead to difficulties in making choices about future study plans and careers (Khatijatussshalihah et al., 2022). Most of intellectual abilities or emotional intelligence students have never been tested, only a few have been tested for planning and career counseling (Asrowi et al., 2020). Factors that influence career decision making include GPA, gender, parents' occupation and income, intelligence tests, and aptitude tests. If there is no support for students to identify themselves in career preparation, then they will most likely have a career that does not match their talents or interests (Dos Santos, 2020). Basically, career choice is an expression or expansion of personality into the world of work followed by identification of certain occupational stereotypes. There are six career environment models they are : realistic, investigative, artistic, social, enterprising and conventional (Ayriza et al., 2020).

Everyone has a unique blend of intelligence. Which of the several types of intelligence can one have. To be said to be intelligent or not, one usually only needs to carry out a standardized test to measure individual intelligence from a psychologist or educator (Abe & Chikoko, 2020). The requirements are seen from IQ, general intelligence, general cognitive abilities, and general mental abilities (Dodd et al., 2022). Often times a person's intelligence is simply defined as IQ (Intelligences Quotient). In fact, IQ has been considered as the only indicator of a person's intelligence, whereas the IQ test only measures intelligence which includes language intelligence and mathematical logic. Real intelligence is more than just linguistic and logical intelligence (Alilateh & Widyantoro, 2019). Eight intelligence according to dr. Howard Gardner are linguistic, logicmathematic, visual spatial, musical, kinesthetic, interpersonal, intrapersonal, and naturalist (Kurniawati et al., 2021). Gardner challenged school education and ancient science thinking that people are born with general cognitive abilities that can be easily measured by short answer tests. Conversely, Multiple Intelligence can provide a new theory with several types of intelligence that can reflect different ways to interact with the world. Everyone has a unique blend of intelligence (Kotova et al., 2021). The Multiple Intelligent theory states that everyone has different talents and different dominant talents. The most important aspect is that from the development of talents that are more dominant, the results will show the individual's progress (Mayub & Fahmizal, 2022).

Bayes' theorem is an approximation to an uncertainty as measured by probability. Bayes' theorem was put forward by Thomas Bayes around 1950. Bayes' theorem has several advantages, namely, it is easy to understand and only requires simple coding, faster in calculations (Ramadhani et al., 2021). Bayes theory is a fundamental statistical approach in pattern recognition. The Bayesian method is a very effective method used in learning based on training data, using conditional probabilities as a basis (Ningsih, 2020). In Bayes' theorem, the first step of the calculation is to find the universal value of the hypothesis (H) contained in the evidence, then add up all the probability values of the evidence from experts (Vangara et al., 2020). Weight product (WP) is one method of decision making that is more efficient and requires shorter calculation time. Used to

solve a problem using multiplication to connect the criterion values, where the value of each criterion must be raised to the power of the criterion concerned (Handrizal et al., 2022). WP method is similar to the Weighted Sum (WS) method, it's just that the WP method has a multiplication of mathematical calculations. The WP method is also known as dimensional analysis because its mathematical structure eliminates one size (Sa'ad et al., 2020). The WP method is an arrangement of alternative decisions that are explained in several ways by decision criteria. So this method does not need to be normalized (Sahoo et al., 2022).

Decision support system for determining profession that produced in this research can provide information and recommendations for professions that are in accordance with the intelligence of prospective senior high school students. Knowing the interests and talents of these students can facilitate the process of learning and teaching activities so that students absorb material and the results obtained can be more optimal, and are not confused about determining careers in the future.

## LITERATURE REVIEW

### Relevant Research

Previous research entitled Expert System For Career Early Determination Based On Howard Gardner's Multiple Intelligence aims to develop an expert system using Forward chaining method that can help students to be able to recognize their potential. Eight components of Multiple Intelligence that are used are in accordance with Howard Gardner's opinion, they are : Verbal-linguistic, logic-mathematical, visual-spatial, rhythmic-music, kinesthetic, interpersonal, intrapersonal and naturalist intelligence. Expert system was developed using desktop programming using Visual Basic 6 (Wulansari et al., 2022).

Research by Fatmasari and Supriyatna entitled Selection and Career Development Based on Interest, Talent and Personality Teenagers Using Forward Chaining developed a web-based expert system using Forward Chaining method. The theory used in determining type of career uses Holland's theory, in which there are six career personality types known as RIASEC. Six career environment models according to John Holland are realistic, investigative, artistic, social, enterprising and conventional types. There are 108 statements that must be answered by the user and then system will display test's results in pdf files (Fatmasari & Supriyatna, 2019).

In a journal entitled Selecting multiple intelligences on children with weighted product, analytical hierarchy process, simple additive weighting and TOPSIS, it aims to determine student intelligence based on multiple intelligences to classify intelligence and know how to learn based on the eight intelligences (Ahsan et al., 2019). This research does not create a system or program, it only uses the SPSS 22.0 tool which is used to process data from questionnaire results. The final result is a comparison of the four methods used and a graph of the results of filling out the respondent's questionnaire in determining intelligence based on multiple intelligence.

### Multiple Intelligence Theory Concept

Multiple intelligence is a model that differentiates a person's intelligence into certain modalities. According to Gardner, everyone has different types of intelligence and no one intelligence is considered higher than another. Intelligence is also defined as a personal tool or talent possessed by someone who may be more in some ways than others (Koolnaphadol et al., 2022). At the core of Gardner's theory of multiple intelligences is an appreciation of the uniqueness that each individual possesses. Learning styles are diverse and use several methods to evaluate them with many ways to make it happen. Artificial intelligence further assists teachers, parents or academic supervisors in identifying the strengths and weaknesses of a student or a child (Agustin et al., 2021).

### Bayes' Theorem And Weighted Product Concept

Bayes' theorem, taken from an English mathematician in the 18th century named Thomas Bayes. Bayes' theorem is a probability theorem in statistics that is used to calculate the probability of an event based on several past events (Chuan et al., 2023). Bayes' theorem is a theorem that has two different interpretations. As Bayes explains, this theorem shows the extent to which a person's subjective beliefs must change reasonably in response to new clues or information (Vural & Telceken, 2022). Bayes' theorem uses statistics to determine trade-offs between various decisions, using the probabilities and values that go along with each option. A technique for overcoming the problem of data ambiguity into definite data (Laia & Hasugian, 2022).

Weighted Product (WP) is a method in a multi-criteria decision support system that aims to solve problems using data that contains various attributes. WP are popular in DSS because of their speed and ease of selection in a specific order in a rating system (Putra et al., 2022). WP method is similar to Weighted Sum (WS) method, it's just that WP method has multiplication in mathematical calculations. WP method is also referred to as dimensional analysis because its mathematical structure eliminates the unit size of a data object. Does not carry out the data normalization process (Sinaga & Sianipar, 2021). WP method is one level above the Simple Additive Weighting Method and one level below that of the Electre Method, both in terms of the difficulty of the calculations and the relatively short steps (Utami & Febriningrum, 2023).

### METHODE

Figure 1 is a conceptual framework for the course of the research from initial observations until create a web based program.

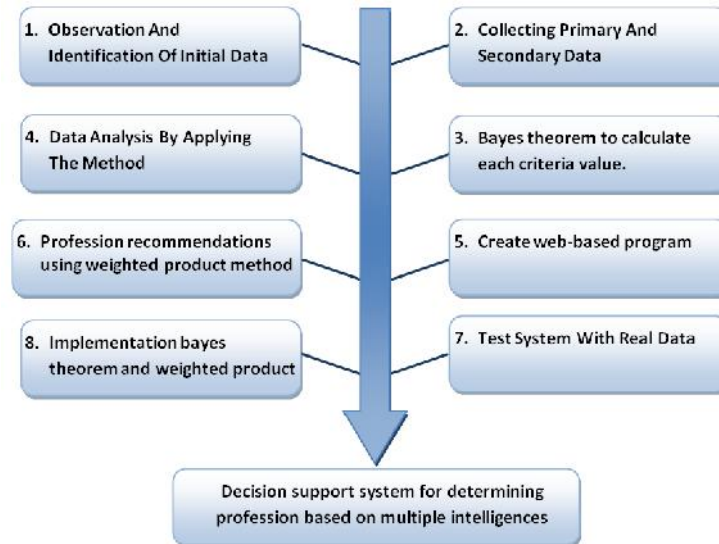


Figure 1  
Research Conceptual Framework

In this research using <sup>22</sup>secondary data and primary data. Secondary data used in this research is data on the characteristics of multiple intelligences which contains 40 statements along with their probability values for each multiple intelligences adapted from research by Huda, entitled Expert System for Talent Detection in Children Aged 4 to 6 Years Using the Bayes Theorem Method (Huda, 2017).

There are 8 types of intelligence (code D1 to D8). Each intelligence has a different main characteristics, main characteristics have a high probability value than other intelligences. Each intelligence also has a probability value of occurrence without looking at other criteria, in this case the criteria are characteristics of intelligence. Multiple intelligence data is presented <sup>17</sup>in table 1

Table 1  
Multiple Intelligence Data

No	Code	Intelligence Type	Quantity	Event's Probability Regardless of Preference Criteria
1	I1	Linguistik	6	0.14
2	I2	Matematis-Logis	6	0.14
3	I3	Visual-spasial	5	0.12
4	I4	Musikal	6	0.14
5	I5	Kinestetik	5	0.12
6	I6	Naturalis	6	0.14
7	I7	Interpersonal	4	0.09
8	I8	Intrapersonal	4	0.09
Total			42	

Characteristics and their relationship to each intelligence presented in table 2. These characteristics will be material's preference by user. There are 40 statements of intelligence characteristics that will be used in this decision support system, that symbolized by C1 to C40.

Table 2  
Characteristics of Multiple Intelligences

No	Multiple Intelligences	Characteristics	Code
1	Linguistik (I1)	Enjoys chatting with others	C1
		Happy to share what he knows	C2
		Easily remembers people's names, or little things they've heard	C3
		Likes to read	C4
		Likes to imitate writing	C5
		Able to listen and retell well	C6
2	Matematis-Logis (I2)	Likes anything related to numbers	C7
		Calculate quickly	C8
		Familiar with calculation operations	C9
		Enjoy games related to logic, such as puzzles, chess and others	C10
...	...	.	...
8	Intrapersonal (I8)	Prefer silence (quiet type)	C39
		Appreciate the things you have	C40
		Lebih suka diam (pendiam)	C39
		Menghargai benda yang dimiliki	C40

Probability value for each intelligence characteristic is presented in table 3. This value was adapted from Huda's research, where in his data research was obtained directly from experts. Each characteristic has a probability value for each intelligence. These values will later be calculated to find out what intelligence is more prominent in the user, based on user preferences.

Table 3  
Data on Probability of Characteristics of Each Multiple Intelligence.

Code	Linguistik (D1)	Matematis-logis (D2)	Visual-Spasial (D3)	Musical (D4)	Kinesthetic (D5)	Naturalis (D6)	Inter personal (D7)	Intra personal (D8)
C1	0.9	0.1	0.05	0.2	0.05	0.1	0.5	0.1
C2	0.9	0.1	0.2	0.05	0.05	0.2	0.2	0.1
C3	0.9	0.1	0.05	0.2	0.05	0.1	0.3	0.3
C4	0.8	0.1	0.1	0.1	0.1	0.1	0.05	0.1
C5	0.8	0.1	0.2	0.1	0.1	0.1	0.1	0.1
C6	0.95	0.2	0.2	0.1	0.1	0.1	0.3	0.24
C7	0.2	0.8	0.1	0.1	0.05	0.05	0.1	0.2
C8	0.2	0.9	0.1	0.1	0.2	0.1	0.1	0.1
C9	0.3	0.8	0.2	0.1	0.2	0.1	0.1	0.2
C10	0.1	0.85	0.3	0.1	0.2	0.1	0.05	0.1

C11	0.05	0.9	0.2	0.1	0.2	0.1	0.2	0.1
C12	0.2	0.8	0.1	0.05	0.1	0.1	0.3	0.3
C13	0.1	0.1	0.9	0.2	0.3	0.2	0.1	0.1
C14	0.15	0.1	0.95	0.1	0.1	0.2	0.2	0.2
C15	0.05	0.15	0.8	0.1	0.2	0.1	0.1	0.2
...	...	...	...	...	...	...	...	...
C41	0.1	0.05	0.2	0.05	0.1	0.25	0.1	0.9
C42	0.1	0.15	0.15	0.1	0.1	0.2	0.1	0.95

Primary data is data obtained through direct interviews with experts, regarding this the author conducted interviews with 4 psychology experts, they are Mr. Muhammad Japar who works as a Psychology lecturer, Mrs. Farida Hidayati works as a Psychology lecturer, Mrs. Agustina Dwi Wardani works as a counseling guidance teacher at Senior High School, and Mr. Agus Kristianto works as HRD in a private company. All data obtained through the interviews are professional data which total 23 professions and their relationship in multiple intelligences. Characteristics of multiple intelligences from experts is presented in table 4.

Table 4  
Characteristics of Multiple Intelligences

Code	Profession	Multiple Intelligences Priority to Professions			
		Very important	important	Quite important	Not too important
K1	Programmer	2, P3	P8	P1, P6	P4, P5, P7
K2	Arsitek	P2, P3	P6, P1	P7, P8	P4, P5
K3	Designer	P3	P5, P6	P2, P8	P1, P4, P7
K4	Photographer	P3	P5, P6, P4	P2, P8	P1, P7
K5	Athlete	P5	P3, P8, P6	2, P4	P1, P5
K6	Dancer	P5, P4	P3	P2, P6	P1, P7, P8
K7	Musician	4, P4	P8	P2, P3, P6	P5, P7
K8	Komposer musik	P4	4, P8	P1, P2, P3, P6	P5, P7
K9	Translator	P1	P8	2, P6, P7	P3, P4, P5
K10	Manager	P8	P1, P2	P3, P8	P4, P5, P6
...	...	...	...	...	...
K22	Director	P2	P1, P7, P8	P3	P4, P5
K23	Teacher	P1, P7	P3, P5, P8	P2	P4, P6

Initial stage is that the user selects the appropriate statement by marking the checklist box and ignoring the statement that does not suit him. Furthermore, preference data is calculated using the Bayes Theorem method to give a value to each multiple intelligence which is a criterion in a profession decision support system. Bayes theorem formula for calculating double evidence is:

$$p(H_1|E_1 E_2 E_3 \dots E_m) = \frac{p(E_1|H_1) \times p(E_2|E_1, H_1) \times \dots \times p(E_m|H_1 \times p(H_1))}{\sum_{k=1}^n p(E_1|H_k) \times p(E_2|E_1, H_k) \times \dots \times p(E_m|H_k \times p(H_k))} \quad (1)$$



$p(E_1|H_1)$  : probability of evidence emergence E, if the hypothesis  $H_1$  occurs

$p(H_i)$  : probability  $H_i$  ignores any evidence

After each criterion value is known, next process is calculating using weighted product method to find professions that match user's preferences. In calculating weighted product, it takes a weight for each criterion. Weights are used to prioritize criteria for each alternative. Rank order centroid (ROC) method used to determining criteria weight. ROC weighting can usually be expressed as an equation

$$W_m = \frac{1}{m} \sum_{i=1}^m \frac{1}{i} \quad (2)$$

Results of WP calculation will be ranked based on the 3 higher alternative values which will be the output of this system, that is professions that are in accordance with the user's multiple intelligences.

## FINDINGS AND DISCUSSION

### Bayes' Theorem Calculation

Bayes Theorem calculation aims to calculate criteria value, that is multiple intelligences value. First step is to retrieve user preference data, then calculate probability value of user preference. Probability value is obtained from database that was previously entered. Following is calculation for determining criteria value using Bayes theorem method if it assumes following user characteristics:

1. (C1) Enjoys chatting with other people
2. (C2) Likes to tell about what he knows
3. (C10) Likes games related to logic, such as puzzles
4. (C12) Can explain things logically
5. (C15) Like judging pictures or paintings
6. (C17) Can read plans or maps well
7. (C37) Friendly people around
8. (C38) Be open in communication
9. (C42) Enjoys doing things alone

From user preference data, probability values will be taken from each characteristics selected by user. <sup>16</sup> Next step is to calculate the probability value using Bayes Theorem method to obtain the criterion value, that is multiple intelligences. Bayes Theorem calculation using equation (1) and the results are:

$$\begin{aligned} p(H_1|E_1E_2E_{10}E_{12}E_{15}E_{17}E_{37}E_{38}E_{42}) &= \frac{0.9 \times 0.9 \times 0.1 \times 0.2 \times 0.05 \times 0.1 \times 0.1 \times 0.1 \times 0.14}{0.0567} \\ &= 0.038 \\ p(H_2|E_1E_2E_{10}E_{12}E_{15}E_{17}E_{37}E_{38}E_{42}) &= \frac{0.1 \times 0.1 \times 0.85 \times 0.8 \times 0.15 \times 0.2 \times 0.1 \times 0.05 \times 0.15 \times 0.14}{0.0567} \\ &= 0.072 \end{aligned}$$

$$\begin{aligned}
p(H_3|E_1E_2E_{10}E_{12}E_{15}E_{17}E_{37}E_{38}E_{42}) &= \frac{0.05 \times 0.2 \times 0.3 \times 0.1 \times 0.8 \times 0.9 \times 0.2 \times 0.2 \times 0.15 \times 0.12}{0.0567} \\
&= 0.5225 \\
p(H_4|E_1E_2E_{10}E_{12}E_{15}E_{17}E_{37}E_{38}E_{42}) &= \frac{0.2 \times 0.05 \times 0.1 \times 0.05 \times 0.1 \times 0.1 \times 0.2 \times 0.2 \times 0.1 \times 0.14}{0.0567} \\
&= 0.0009 \\
p(H_5|E_1E_2E_{10}E_{12}E_{15}E_{17}E_{37}E_{38}E_{42}) &= \frac{0.05 \times 0.05 \times 0.2 \times 0.1 \times 0.2 \times 0.2 \times 0.1 \times 0.2 \times 0.1 \times 0.12}{0.0567} \\
&= 0.0016 \\
p(H_6|E_1E_2E_{10}E_{12}E_{15}E_{17}E_{37}E_{38}E_{42}) &= \frac{0.1 \times 0.2 \times 0.1 \times 0.1 \times 0.1 \times 0.1 \times 0.1 \times 0.2 \times 0.2 \times 0.14}{0.0567} \\
&= 0.0038 \\
p(H_7|E_1E_2E_{10}E_{12}E_{15}E_{17}E_{37}E_{38}E_{42}) &= \frac{0.5 \times 0.2 \times 0.05 \times 0.3 \times 0.1 \times 0.1 \times 0.8 \times 0.9 \times 0.1 \times 0.09}{0.0567} \\
&= 0.3266 \\
p(H_8|E_1E_2E_{10}E_{12}E_{15}E_{17}E_{37}E_{38}E_{42}) &= \frac{0.1 \times 0.1 \times 0.1 \times 0.3 \times 0.1 \times 0.1 \times 0.1 \times 0.2 \times 0.95 \times 0.09}{0.0567} \\
&= 0.0345
\end{aligned}$$

Based on the calculation above, the value of each criterion is as follows:

Linguistik (I1) = 0.0381

Matematis- Logis (I2) = 0.072

Visual-spasial (I3) = 0.5225

Musikal (I4) = 0.0009

Kinestetik (I5) = 0.0016

Naturalis (I6) = 0.0038

Interpersonal (I7) = 0.3266

Intrapersonal (I8) = 0.0345

### Weighted Product Method Calculation

WP method calculation aims to find alternatives, namely professions based on user criteria that have been calculated previously using Bayes Theorem method. Criteria obtained are calculated using WP method, but before calculating using WP, each criterion is weighted against alternative using Rank Order Centroid (ROC) method using equation (2). Assumption of weighting criteria on alternatives with attributes of 2 intelligences is very important, 1 intelligence is important and 3 intelligences is quite important:

$$w_1 = \frac{(\frac{1}{1} + \frac{1}{1} + \frac{1}{2} + \frac{1}{3} + \frac{1}{3} + \frac{1}{3} + \frac{1}{4} + \frac{1}{4}) \times \frac{1}{2}}{8} = 0.5$$

$$w_2 = \frac{(\frac{1}{1} + \frac{1}{1} + \frac{1}{2} + \frac{1}{3} + \frac{1}{3} + \frac{1}{3} + \frac{1}{4} + \frac{1}{4}) \times \frac{1}{2}}{8} = 0.5$$

$$w_3 = \frac{(0 + 0 + \frac{1}{2} + \frac{1}{3} + \frac{1}{3} + \frac{1}{3} + \frac{1}{4} + \frac{1}{4}) \times \frac{1}{1}}{8} = 0.25$$

$$W_4 = \frac{(0 + 0 + 0 + \frac{1}{3} + \frac{1}{3} + \frac{1}{3} + \frac{1}{4} + \frac{1}{4}) \times \frac{1}{3}}{8} = 0.19$$

$$W_5 = \frac{(0 + 0 + 0 + \frac{1}{3} + \frac{1}{3} + \frac{1}{3} + \frac{1}{4} + \frac{1}{4}) \times \frac{1}{3}}{8} = 0.19$$

$$W_6 = \frac{(0 + 0 + 0 + \frac{1}{3} + \frac{1}{3} + \frac{1}{3} + \frac{1}{4} + \frac{1}{4}) \times \frac{1}{3}}{8} = 0.19$$

$$W_7 = \frac{(0 + 0 + 0 + 0 + 0 + 0 + \frac{1}{4} + \frac{1}{4}) \times \frac{1}{2}}{8} = 0.6525$$

$$W_8 = \frac{(0 + 0 + 0 + 0 + 0 + 0 + \frac{1}{4} + \frac{1}{4}) \times \frac{1}{2}}{8} = 0.6525$$

In this method calculation simulation, authors use 10 alternatives out of 23 alternatives. Data on relationship of interest criteria to alternatives is presented in table 4. After obtaining weight value of each criterion for alternative, then S-Vector calculation is performed for each alternative by multiplying all criteria to the power of weight previously calculated using the ROC method. Complete calculation results of S-Vector are presented in table 5.

$$S_1 = (0.072^{0.49}) \times (0.523^{0.49}) \times (0.034^{0.24}) \times (0.038^{0.18}) \times (0.004^{0.18}) \times (0.0009^{0.09}) \times (0.0016^{0.09}) \times (0.33^{0.09}) = 0.0048$$

$$S_2 = (0.072^{0.52}) \times (0.523^{0.52}) \times (0.038^{0.27}) \times (0.004^{0.27}) \times (0.327^{0.15}) \times (0.034^{0.15}) \times (0.004^{0.063}) \times (0.004^{0.063}) = 0.0037$$

Table 5  
Simulation S-Vector Calculation Method

Vector-S	Vector-S Value
S <sub>1</sub>	0.00479
S <sub>2</sub>	0.00371
S <sub>3</sub>	0.00240
S <sub>4</sub>	0.00042
S <sub>5</sub>	0.00040
S <sub>6</sub>	0.00014
S <sub>7</sub>	0.00031
S <sub>8</sub>	0.00079
S <sub>9</sub>	0.00358
S <sub>10</sub>	0.00865

After getting all the S-Vector values, next process is to carry out V-Vector calculations by dividing each S-Vector value by total S-Vector values. Complete calculations results and value ranking are presented in table 6.

Total Sum of All S-Vectors:

$$\sum_{j=1}^n (X_j)^{w_j} = 0.00479 + 0.00371 + 0.0024 + 0.00042 + 0.0004 + 0.00014 + 0.00031 \\ + 0.00079 + 0.00358 + 0.00865 = 0.02518$$

$$V_1 = \frac{0.00479}{0.02518} = 0.19025$$

$$V_2 = \frac{0.00371}{0.02518} = 0.14727$$

Table 6  
Simulation V-Vector Calculation Method And Value Ranking

Calculation		Ranking	
Vector-S	Vector-V Value	Vector-S	Vector-V Value
S <sub>1</sub>	0.19025	S <sub>10</sub>	0.34337
S <sub>2</sub>	0.14727	S <sub>1</sub>	0.19025
S <sub>3</sub>	0.09526	S <sub>2</sub>	0.14727
S <sub>4</sub>	0.01671	S <sub>9</sub>	0.14207
S <sub>5</sub>	0.01594	S <sub>3</sub>	0.09526
S <sub>6</sub>	0.00543	S <sub>8</sub>	0.03156
S <sub>7</sub>	0.01213	S <sub>4</sub>	0.01671
S <sub>8</sub>	0.03156	S <sub>5</sub>	0.01594
S <sub>9</sub>	0.14207	S <sub>7</sub>	0.01213
S <sub>10</sub>	0.34337	S <sub>6</sub>	0.00543

Based on simulation calculation method results, it can be concluded that V-Vector value from 3<sup>rd</sup> order, the highest values are V<sub>10</sub>, V<sub>1</sub> and V<sub>2</sub>. From Vector-V ranking results, it can be concluded that profession outputs are manager, programmer and architect.

### System Testing

In developing a system, it is necessary to have a system testing stage, to assess whether system is running as it should (Iskandar & Marjuki, 2022). Testing process is carried out by comparing the results of system calculations with results given by experts directly. In testing system will use test data as many as 50 high school students who have filled out decision support system for determining professions based on multiple intelligences. System output for each student is in form of 3 professions consulted with experts then system's results are compared with professional recommendations results from expert observations. From 50 test data, results output will be calculated, which are same as expert recommendations results. Same results will be divided by total output of the profession from 50 test data, that are totaling 150 to get accuracy system level. 50 user data that has entered preferences according to their personality. user data and their preferences are presented in Figure 1 and Figure 2.

<input type="checkbox"/>	ID	NAMA	EMAIL	KELAMIN	TTL	CREATED
<input type="checkbox"/>	81	ZAHRA SUKMA YASMIN	zahra@email.com	Perempuan	Dec. 28, 2007	Dec. 15, 2022, 6:02 p.m.
<input type="checkbox"/>	80	Sal'datud Daroini	daroi@email.com	Perempuan	July 6, 2008	Dec. 15, 2022, 6 p.m.
<input type="checkbox"/>	79	Muhammad Rizky Julianto	rizky@email.com	Laki-laki	July 12, 2010	Dec. 15, 2022, 5:57 p.m.
<input type="checkbox"/>	78	Adinda Dwi Oktaviani	adinda@email.com	Perempuan	Oct. 31, 2007	Dec. 15, 2022, 5:55 p.m.
<input type="checkbox"/>	77	M EVAN FAIRUZ SAPUTRA	evan@email.com	Laki-laki	April 15, 2008	Dec. 15, 2022, 5:53 p.m.
<input type="checkbox"/>	76	WENDA FELIZIA	wenda@email.com	Perempuan	July 28, 2008	Dec. 15, 2022, 5:50 p.m.
<input type="checkbox"/>	75	MUHAMMAD MAS RIZAL	rizal@email.com	Laki-laki	July 6, 2008	Dec. 15, 2022, 5:48 p.m.
<input type="checkbox"/>	74	Putri Rizqia Firda Amella	putri@email.com	Perempuan	Feb. 11, 2009	Dec. 15, 2022, 5:45 p.m.
<input type="checkbox"/>	73	Galuh hayyuning eka	galuh@email.com	Perempuan	Aug. 22, 2007	Dec. 15, 2022, 5:43 p.m.
<input type="checkbox"/>	72	DINA KARUNIA SAPUTRI	dina@email.com	Perempuan	Dec. 14, 2007	Dec. 15, 2022, 5:40 p.m.
<input type="checkbox"/>	71	Gadis Rizkiya Aprilian	gadis@email.com	Perempuan	April 7, 2010	Dec. 15, 2022, 5:38 p.m.
<input type="checkbox"/>	70	Nazilah nur aini r	nazilah@email.com	Perempuan	Oct. 28, 2009	Dec. 15, 2022, 5:35 p.m.
<input type="checkbox"/>	69	AISYATUL MAGHFIROH	aisyatul@email.com	Perempuan	Nov. 9, 2008	Dec. 15, 2022, 5:32 p.m.

Figure 2  
User Data

<input type="checkbox"/>	ID	PENGGUNA	CIRI	NILAI KECERDASAN
<input type="checkbox"/>	72	ZAHRA SUKMA YASMIN	"[ln '\21';ln '\31';ln '\61';ln '\101';ln '\161';ln '\181';ln '\291';ln '\361';ln '\371';ln '\381';ln '\401';ln '\411';ln '\421']"	"[ln '\11'; 0.04438337726547022;ln '\21'; 6.1283097661626e-05;ln '\31'; 0.037968737109307864;ln '\41'; 0.0013842768737768493;ln '\51'; 3.2958973185163076e-05;ln '\61'; 0.0015380854153076102;ln '\71'; 0.64072243871957;ln '\81'; 0.27390884255261616ln]"
<input type="checkbox"/>	71	Sal'datud Daroini	"[ln '\11';ln '\21';ln '\31';ln '\61';ln '\111';ln '\121';ln '\151';ln '\161';ln '\181';ln '\211';ln '\281';ln '\291';ln '\301';ln '\321';ln '\331';ln '\341';ln '\351';ln '\361';ln '\371';ln '\381';ln '\391';ln '\401';ln '\411';ln '\421']"	"[ln '\11'; 0.00012392261818959245;ln '\21'; 1.2078227893722465e-07;ln '\31'; 0.0007538654617552336;ln '\41'; 3.865032925991189e-06;ln '\51'; 1.472393456156908e-06;ln '\61'; 0.009894484290537442;ln '\71'; 0.8586998866430705;ln '\81'; 0.1305223827697467ln]"
<input type="checkbox"/>	70	Muhammad Rizky Julianto	"[ln '\11';ln '\21';ln '\61';ln '\71';ln '\121';ln '\171';ln '\221';ln '\231';ln '\271';ln '\291';ln '\401';ln '\411']"	"[ln '\11'; 0.7418035714746815;ln '\21'; 0.0077120579230636165;ln '\31'; 0.0223098816488626;ln '\41'; 0.007320429981658042;ln '\51'; 0.0004647892051846376;ln '\61'; 0.00482036201914761;ln '\71'; 0.034859190388847806;ln '\81'; 0.18071004297578705ln]"
<input type="checkbox"/>	69	Adinda Dwi Oktaviani	"[ln '\11';ln '\21';ln '\51';ln '\111';ln '\131';ln '\141';ln '\151';ln '\161';ln '\211';ln '\221';ln '\241';ln '\251';ln '\261';ln '\271';ln '\281';ln '\291';ln '\331';ln '\341';ln '\351';ln '\371';ln '\381';ln '\401';ln '\411';ln '\421']"	"[ln '\11'; 0.0005118117983618125;ln '\21'; 8.330270155628459e-08;ln '\31'; 0.7112721677805299;ln '\41'; 0.0003412078655745418;ln '\51'; 0.14915658123687106;ln '\61'; 0.016175780293904207;ln '\71'; 0.11698555391127144;ln '\81'; 0.005556813810785393ln]"
<input type="checkbox"/>	68	M EVAN FAIRUZ SAPUTRA	"[ln '\11';ln '\21';ln '\31';ln '\51';ln '\61';ln '\91';ln '\101';ln '\141';ln '\151';ln '\161';ln '\171';ln '\211';ln '\221';ln '\231';ln '\241';ln '\251';ln '\261';ln '\271';ln '\281';ln '\291';ln '\301';ln '\311';ln '\321';ln '\331';ln '\341';ln '\351';ln '\361';ln '\371';ln '\381';ln '\391';ln '\401';ln '\411';ln '\421']"	"[ln '\11'; 0.002073098320459366;ln '\21'; 3.9756451004405385e-08;ln '\31'; 0.26956859430481145;ln '\41'; 4.849352796396179e-05;ln '\51'; 0.006281066479141717;ln '\61'; 0.0007777777777777777;ln '\71'; 0.0007777777777777777;ln '\81'; 0.0007777777777777777ln]"

Figure 3  
User Preference Data and Intelligence Value

In the first stage, system will calculate each criteria value, that is value of each intelligence based on preferences selected by user using Bayes' Theorem calculations. Next process after obtaining each criteria value is to retrieve data from the 23 professions along with predetermined criteria weights, which will then be processed to

obtain an S-Vector value. S-Vector calculation is processed by considering criteria values and each criteria weight. After obtaining S-Vector values for each profession data, calculations will then be carried out to determine V-Vector values. This value is a comparison S-Vector values of each profession divided by total S-Vectors. System output is professions with 3<sup>rd</sup> highest scores. Output display of 50 data users is presented in table 7.

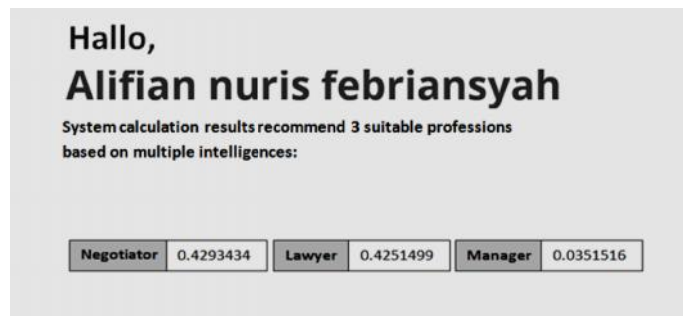


Figure 4  
User Preference Data and Intelligence Value

Table 7  
Output Comparison of System Results with Expert Observation Results

User	System	Experts	True	Total
User1	poet, translator, musician	poet, musician, translator	3	3
User2	poet, teacher, singer	poet, journalist, singer	2	3
User3	teacher, designer, singer	designer, photographer, lawyer	1	3
User4	accountant, manager, composer	accountant, scientist, designer	1	3
User5	accountant, programmer, designer	designer, programmer, Architect	2	3
...	...	...	...	...
User50	manager, translator, counselor	manager, translator, accountant	2	3
Total			101	150

Based on table 7, correct alternatives total is 101 out of 150 alternatives. From these data system accuracy can be calculated by dividing correct alternatives total by all alternatives from 50 test data.

$$\text{System Accuracy} = \frac{101}{150} \times 100\% = 67,33\%$$

## CONCLUSION

Based on the system that has been developed in this study which aims to produce professional recommendations based on multiple intelligences using the Bayes Theorem and Weighted Product methods, it is able to assess a person's level of intelligence and provide professional recommendations that match the value of intelligence quite well. Accuracy level obtained on system with the highest 3 alternatives using 50 test data is

67.33%. From accuracy level obtained by system, it can be concluded that Bayes Theorem and Weighted Product can provide quite good support in choosing a profession based on multiple intelligences.

## REFERENCES

- Abe, E. N., & Chikoko, V. (2020). Exploring the factors that influence the career decision of STEM students at a university in South Africa. *International Journal of STEM Education*, 7(1), 1–14. <https://doi.org/10.1186/s40594-020-00256-x>
- Agustin, M., Puspita, R. D., Inten, D. N., & Setiyadi, R. (2021). Early detection and stimulation of multiple intelligences in kindergarten. *International Journal of Instruction*, 14(4), 873–890. <https://doi.org/10.29333/iji.2021.14450a>
- Ahsan, M., Setiyaningsih, W., Susilowati, M., Dijaya, R., & Tjahjanti, P. H. (2019). Selecting multiple intelligences on children with weighted product, analytical hierarchy process, simple additive weighting and TOPSIS. *Journal of Physics: Conference Series*, 1402(7), 1–7. <https://doi.org/10.1088/1742-6596/1402/7/077033>
- Alilateh, A., & Widyantoro, A. (2019). The effectiveness of using multiple intelligence activities in listening comprehension and improving students' interest. *LingTera*, 6(2), 111–118. <https://doi.org/10.21831/lt.v6i2.10625>
- Asrowi, Hanif, M., & Setiawan, B. (2020). Career Development: The Role of Career Counsellor towards Job Counselling. *International Journal of Instruction*, 14(1), 661–672. <https://doi.org/10.29333/IJI.2021.14140A>
- Ayriza, Y., Triyanto, A., Setiawati, F. A., & Gunawan, N. E. (2020). Exploring children's career interests and knowledge based on holland's theory. *International Journal of Instruction*, 13(4), 643–662. <https://doi.org/10.29333/iji.2020.13440a>
- Chuan, Y. S., Hee, L. M., Hoou, H. K., & Cheng, E. H. (2023). Bayes' Theorem for Multi-Bearing Faults Diagnosis. *International Journal of Automotive and Mechanical Engineering*, 20(2), 10371–10385. <https://doi.org/10.15282/ijame.20.2.2023.04.0802>
- Dodd, V., Hanson, J., & Hooley, T. (2022). Increasing students' career readiness through career guidance: measuring the impact with a validated measure. *British Journal of Guidance and Counselling*, 50(2), 260–272. <https://doi.org/10.1080/03069885.2021.1937515>
- Dos Santos, L. M. (2020). Self-Efficacy and Career Decision of Pre-Service Secondary School Teachers: A Phenomenological Analysis. *International Journal of Instruction*, 14(1), 521–536. <https://doi.org/10.29333/IJI.2021.14131A>
- Ernawati, E., Tsurayya, H., & Ghani, A. R. A. (2019). Multiple intelligence assessment in teaching English for young learners. *Research and Evaluation in Education*, 5(1), 21–29. <https://doi.org/10.21831/reid.v5i1.23376>
- Fadloli, M., Sumarti, S. S., & Mursiti, S. (2021). Exploration of Multiple Intelligences for High School Students in Chemistry Learning in Semarang City. *Journal of*

*Innovative Science Education*, 10(2), 158–167. <https://doi.org/10.15294/jise.v9i3.41411>

Fatmasari, F., & Supriyatna, A. (2019). Election and Career Development Based on Interest, Talent and Personality Teenagers Using Forward Chaining. *JUITA : Jurnal Informatika*, 7(1), 33. <https://doi.org/10.30595/juita.v7i1.4128>

Handrizal, Hayatunnufus, & Aldino. (2022). Implementation of Weighted Product and Technique for Order Preference By Similarity To Ideal Solution in Selecting the Best Particleboard. *Journal of Theoretical and Applied Information Technology*, 100(19), 5462–5468. <http://www.jatit.org/volumes/Vol100No19/5Vol100No19.pdf>

Hilyana, F. S., & Khotimah, T. (2021). Analysis of Student Activities in E-learning Based on Multiple Intelligences. *Journal of Physics: Conference Series*, 1779(1), 1–7. <https://doi.org/10.1088/1742-6596/1779/1/012054>

Huda, D. N. (2017). Expert System for Talent Detection in Children Aged 4 to 6 Years Using the Bayes Theorem Method. *Jurnal Bangkit Indonesia*, 6(2), 1–16. <https://doi.org/10.52771/bangkitindonesia.v6i2.44>

Iskandar, D., & Marjuki. (2022). Classification of Melinjo Fruit Levels Using Skin Color Detection With Rgb and Hsv. *Journal of Applied Engineering and Technological Science*, 4(1), 123–130. <https://doi.org/10.37385/jaets.v4i1.958>

Khatijatusshalihah, Riamanda, I., Aprilia, E. D., & Nisa, H. (2022). Career decision self-efficacy of Indonesian students. *INSPIRA: Indonesian Journal of Psychological Research*, 3(1), 17–22. <https://doi.org/10.32505/inspira.v3i1.4131>

Koolnaphadol, P., Inang, P., & Dudsdeemaytha, J. (2022). Online Career Intelligence Test: Self-Assessment for Students' Career and Abilities. *International Journal of Instruction*, 15(2), 1075–1086. <https://doi.org/10.29333/iji.2022.15259a>

Kotova, S., Hasanova, I., Sadovnikova, N., Komarov, E., & Wenbin, L. (2021). Self-efficacy as a personality predictor of the career orientations of college students. *International Journal of Instruction*, 14(4), 1047–1064. <https://doi.org/10.29333/iji.2021.14460a>

Kurniawati, Y., Wigati, M. R., & Hasri, S. (2021). Information and communications technology (ICT) based of chemistry instructional learning design for students with multiple intelligence. *Journal of Physics: Conference Series*, 1779(1), 1–8. <https://doi.org/10.1088/1742-6596/1779/1/012062>

Laia, T., & Hasugian, P. S. (2022). Expert System to Diagnose Eye Disease Due to Frequently Using Computer with Bayes Theorem Method. *Journal of Intelligent Decision Support System (IDSS)*, 5(1), 1–9. <https://doi.org/10.35335/idss.v5i1.46>

Mayub, A., & Fahmizal, F. (2022). Developing Multiple Intelligences Through Ict-Based E-Learning Program. *IJIET (International Journal of Indonesian Education and Teaching)*, 7(1), 48–60. <https://doi.org/10.24071/ijiet.v7i1.3117>

Ningsih, C. (2020). Expert System Diagnosing Heart Disease using Bayes ' Theorem Method. *International Journal of Basic and Applied Science*, 9(2), 38–42.



<https://doi.org/https://doi.org/10.35335/ijobas.v9i2.14>

Nulhakim, L., & Berlian, L. (2020). Investigation of multiple intelligence of primary school students. *Jurnal Inovasi Pendidikan IPA*, 6(1), 101–113. <https://doi.org/10.21831/jipi.v6i1.29478>

Putra, S. D., Borman, R. I., & Arifin, G. H. (2022). Assessment of Teacher Performance in SMK Informatika Bina Generasi using Electronic-Based Rating Scale and Weighted Product Methods to Determine the Best Teacher Performance. *International Journal of Informatics, Economics, Management and Science*, 1(1), 55. <https://doi.org/10.52362/ijiems.v1i1.693>

Ramadhani, M., Sihombing, V., & Masrizal, M. (2021). Implementation of the Bayes theorem method for identifying diseases of children under five. *Sinkron*, 5(2), 260–265. <https://doi.org/10.33395/sinkron.v5i2.10907>

Sa'ad, M. I., Bryan, D., Kusrini, & Supriatin. (2020). Decision Support System for Covid19 Affected Family Cash Aid Recipients Using the Naïve Bayes Algorithm and the Weight Product Method. *2020 3rd International Conference on Information and Communications Technology, ICOIACT 2020*, 120–125. <https://doi.org/10.1109/ICOIACT50329.2020.9331964>

Sahoo, B., Behera, R. N., & Pattnaik, P. K. (2022). A Comparative Analysis of Multi-Criteria Decision Making Techniques for Ranking of Attributes for e-Governance in India. *International Journal of Advanced Computer Science and Applications*, 13(3), 65–70. <https://doi.org/10.14569/IJACSA.2022.0130311>

Sinaga, D. C. P., & Sianipar, B. (2021). Application of the Weighted Product Method for the Selection of Candidates for the National Science Olympiad At Smk Yapim Biru Infokum, 10(1), 126–134. <http://infor.seaninstitute.org/index.php/infokum/article/view/224>

Utami, L. A., & Febriningrum, K. (2023). Implementation of Weighted Product Method in Determining Selection the Best Music Streaming Service Application. *Jurnal Techno Nusa Mandiri*, 20(1), 31–40. <https://doi.org/10.33480/techno.v20i1.3126>

Vangara, R. V. B., Thirupathur, K., & Vangara, S. P. (2020). Opinion Mining Classification using Naive Bayes Algorithm. *International Journal of Innovative Technology and Exploring Engineering*, 9(5), 495–498. <https://doi.org/10.35940/ijitee.e2402.039520>

Vural, M. S., & Telceken, M. (2022). Modification of posterior probability variable with frequency factor according to Bayes Theorem. *Journal of Intelligent Systems with Applications*, 5(1), 19–26. <https://doi.org/10.54856/jiswa.202205195>

Wulansari, R. E., Sakti, R. H., Ambiyar, A., Giatman, M., Wakhinuddin, & Syah, N. (2022). Expert System for Career Early Determination Based on Howard Gardner's Multiple Intelligence. *Journal of Applied Engineering and Technological Science*, 3(2), 67–76. <https://doi.org/10.37385/jaets.v3i2.568>

## 8% Overall Similarity

Top sources found in the following databases:

- 6% Internet database
- 3% Publications database
- Crossref database
- Crossref Posted Content database
- 0% Submitted Works database

### TOP SOURCES

The sources with the highest number of matches within the submission. Overlapping sources will not be displayed.

1	<b>epawebapp.epa.ie</b>	2%
	Internet	
2	<b>hrmars.com</b>	<1%
	Internet	
3	<b>Kasriana, R Ode. "Description of The Number Theory Course Problem S...</b>	<1%
	Crossref	
4	<b>Shashank J. Thanki, Jitesh Thakkar. "Interdependence analysis of lean...</b>	<1%
	Crossref	
5	<b>scilit.net</b>	<1%
	Internet	
6	<b>M Ahsan, W Setiyaningsih, M Susilowati, R Dijaya, P H Tjahjanti. "Select...</b>	<1%
	Crossref	
7	<b>ebooktake.in</b>	<1%
	Internet	
8	<b>S. Vinodh, Somishang A. Shimray. "Analysis of barriers for implementa...</b>	<1%
	Crossref	

9	ijournalse.org	Internet	<1%
10	he.kendallhunt.com	Internet	<1%
11	H. Yasuda. "Image arrangement paradigm for eye contact videoconfer...	Crossref	<1%
12	journal.unnes.ac.id	Internet	<1%
13	slideshare.net	Internet	<1%
14	Farid Ahmadi, Wahyu Hardyanto, Suwito Eko, I Made, Hermawan Syahp...	Crossref	<1%
15	Linda Perdana Wanti, Oman Somantri. "The Comparison of Quality Sna...	Crossref	<1%
16	Macro Ramadhani, Volvo Sihombing, Masrizal Masrizal. "Implementati...	Crossref	<1%
17	journal.yrpioku.com	Internet	<1%
18	jppipa.unram.ac.id	Internet	<1%
19	jurnal.staialhidayahbogor.ac.id	Internet	<1%
20	S. Park, J.-K. Kim. "Short-term Scheduling of Non-sequential Multipurp...	Crossref	<1%

- 
- 21 Intan Indri Fitriyani, Nur Ngaenun Agustina, Alya Nur Fajarianti. "Weight... <1%  
Crossref
- 
- 22 proceedings.itltrisakti.ac.id <1%  
Internet